

ÜZBL

"The most 'usable' classroom cases"

RUGGED SHELL

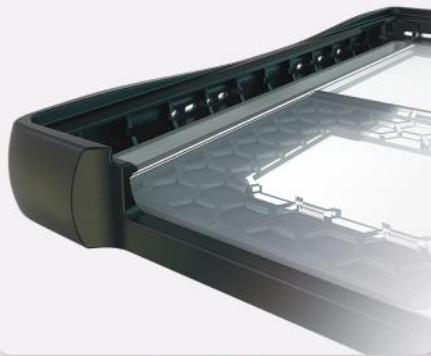
FOR MICROSOFT **SURFACE GO 1/2/3**



PENCIL HOLDER



EDGE PROTECTION



LIGHTWEIGHT CHASSIS



STYLUS & HAND STRAP

We crafted the Rugged Shell Case to seamlessly integrate with its inherent design aesthetics. The Surface's Type Keyboard Cover easily detaches and reattaches magnetically.

RUBBERIZED EDGES

Durable yet soft TPU rubber envelops all corners and edges of the device, incorporating strategically positioned 'air pockets' on each corner.

DESIGNED FOR K12

Designed to meet the needs of both students and IT departments, providing a robust solution for safeguarding devices while also ensuring seamless and straightforward installation

PRODUCT SPECIFICATIONS

RUGGED HARD SHELL



Weight

7.6 oz

Material

Polycarbonate + TPU

Product Part Numbers

LAP7122 | Rugged Shell for Microsoft Surface GO 1 / 2 / 3

Dimensions

10.2 x 7.5 x .75 in

Customization

Custom School Logo & Colors

Colors

Black



Product Information



1 (949) 422 1591



sales@uzbl.com
www.uzbl.com