

**ÜZBL**

"The most 'usable' classroom cases"

# RUGGED SHELL

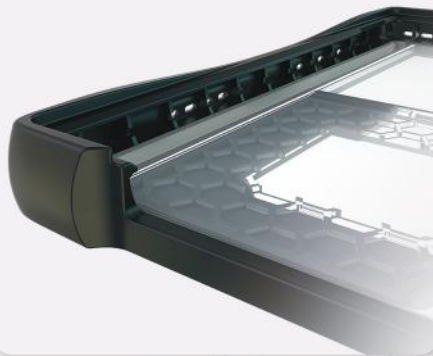
## FOR MICROSOFT SURFACE PRO 8/9



PENCIL HOLDER



EDGE PROTECTION



LIGHTWEIGHT CHASSIS



### STYLUS & HAND STRAP

We crafted the Rugged Shell Case to seamlessly integrate with its inherent design aesthetics. The Surface's Type Keyboard Cover easily detaches and reattaches magnetically.

### RUBBERIZED EDGES

Durable yet soft TPU rubber envelops all corners and edges of the device, incorporating strategically positioned 'air pockets' on each corner.

### DESIGNED FOR K12

Designed to meet the needs of both students and IT departments, providing a robust solution for safeguarding devices while also ensuring seamless and straightforward installation

# PRODUCT SPECIFICATIONS

## RUGGED HARD SHELL



### Weight

7.6 oz

### Material

Polycarbonate + TPU

### Product Part Numbers

LAP7122 | Rugged Shell for Microsoft Surface GO 1 / 2 / 3

### Dimensions

10.2 x 7.5 x .75 in

### Customization

Custom School Logo & Colors

### Colors

Black



Product Information



1 (949) 422 1591



sales@uzbl.com  
www.uzbl.com